

# St. Peter, MN

# Community Hospital

**GPS ID:** \_\_\_\_\_ **Airspace:** E/G  
**Radio Preset:** \_\_\_\_\_ **Weather:** MKT -110.8  
**Heading/Dist:** \_\_\_\_\_° / \_\_\_\_\_nm **Nearest Aprt:** MKT (E/G)  
**ETE / Fuel:** \_\_\_\_\_ mins/ \_\_\_\_\_lbs **VORTAC:**

### Comm/Flight Following/Medical Support

### Pad Information

*Surface / Elev:* Asphalt / \*\*\*  
*TLOF/FATO:* /  
*Max Pad Weight:* \*\*\* lbs  
*Max Rotor Diam:* \*\*\* ft  
*Security:* None

### Lighting

*PCL:* No  
*Beacon:* No  
*Perimeter:* Amber  
*Flood:* No  
*Windsock:* Lighted

### Preferred App/Dep:

### Obstructions / Cautions / Notes

Parking lot lights to S and N. Water tower 1/4 mile NE of hospital



St. Peter, MN Community Hospital ( ) N 44° 20.96 W 93° 58.48

IMPORTANT: The pilot retains full responsibility for safe and legal flight operations, regardless of data presented on this page.

# St. Peter, MN

# Community Hospital

### Jet-A Fuel Information

*Nearest Fuel:* KMKT  
*Phone:* 507-625-6006

### Nearest Weather Reporting

MKT 110.8  
 507-625-3726

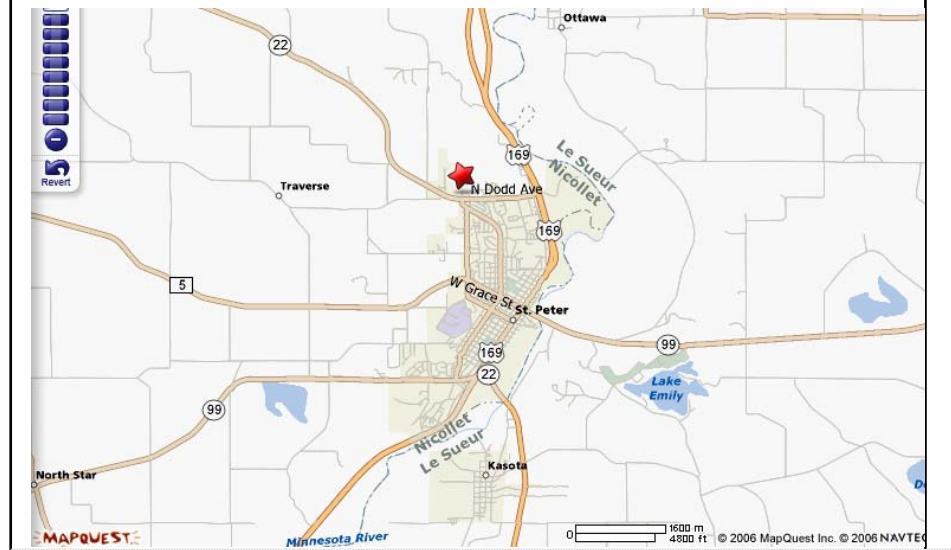
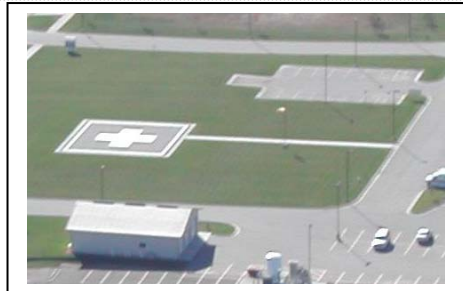
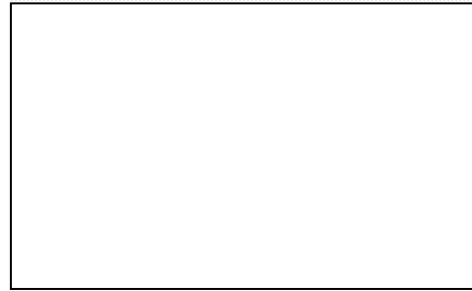
### Hospital Information

*Unit:* Emergency Department  
*Unit Phone:* 507-931-2200  
*Addr:* 1900 North Sunrise Drive  
 St. Peter, MN 56082  
*County:* Nicollet

*Frequency/PL* (WCODE / Tone/ TCODE):  
 T-155.355 / PL 3 / 74.4 /  
 R-155.355 / PL 3 / 74.4 /  
*Encode:*  
*MRI:*

### Additional Notes

Hospital N side of town. Helipad E side of hospital.



St. Peter, MN Community Hospital ( ) N 44° 20.96 W 93° 58.48

IMPORTANT: The pilot retains full responsibility for safe and legal flight operations, regardless of data presented on this page.