

Princeton, MN Fairview Northland Regional Hospital

GPS ID: _____ **Airspace:** G
Radio Preset: _____ **Weather:** KPNM 119.025
Heading/Dist: _____ ° / _____ nm **Nearest Aprt:** KPNM (G)
ETE / Fuel: _____ mins / _____ lbs **VORTAC:**

Comm/Flight Following/Medical Support

Pad Information

Surface / Elev:
TLOF/FATO:
Max Pad Weight:
Max Rotor Diam:
Security:

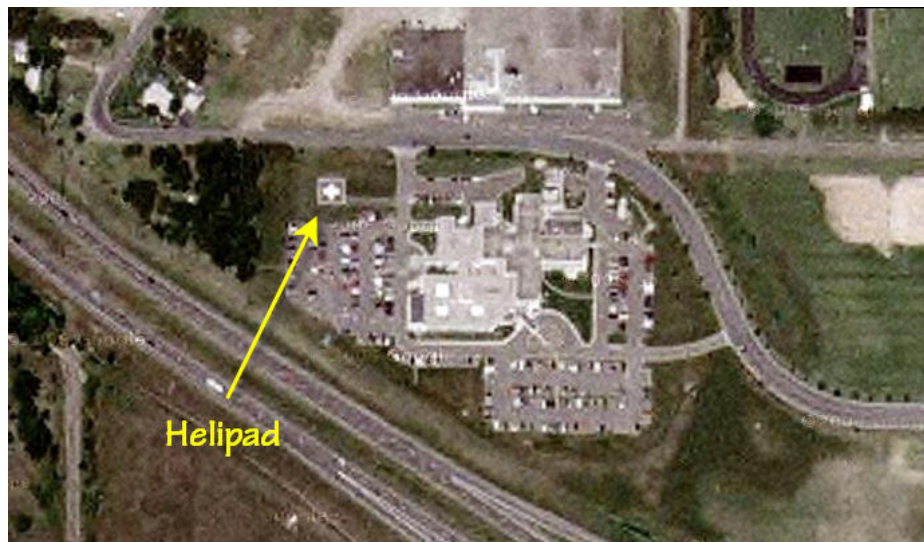
Lighting

PCL:
Beacon:
Perimeter:
Flood:
Windsock:

Preferred App/Dep:

Obstructions / Cautions / Notes

30' wires East to West North of pad, 40' trees West of pad
 30' light poles South of pad



Princeton, MN Fairview Northland Regional Hospital

Jet-A Fuel Information

Nearest Fuel: KSTC (20nm)
Phone: 800-328-2346

Nearest Weather Reporting

KPNM 119.025
 763-389-0615

Hospital Information

Unit:
Unit Phone: 763-389-1313
Addr: 911 Northland Dr
 Princeton, MN 55371
County: Mille Lacs

Frequency/PL (Wulf / Tone/ Tech):
 T-155.385 / PL 24 / 131.8 / 20
 R-155.385 / PL 24 / 131.8 / 20
Encode:
MRI:

Additional Notes

2 story tan brick bldg

