

Faribault, MN

District One Hospital

GPS ID: _____ **Airspace:** G
Radio Preset: _____ **Weather:** KFBL -111.2
Heading/Dist: _____ ° / _____ nm **Nearest Aprt:** KFBL (G)
ETE / Fuel: _____ mins / _____ lbs **VORTAC:** FOW 041°/7.0

Comm/Flight Following/Medical Support

Pad Information

Surface / Elev: Concrete / 1065
TLOF/FATO: 44x44 /
Max Pad Weight:
Max Rotor Diam:
Security: Fence

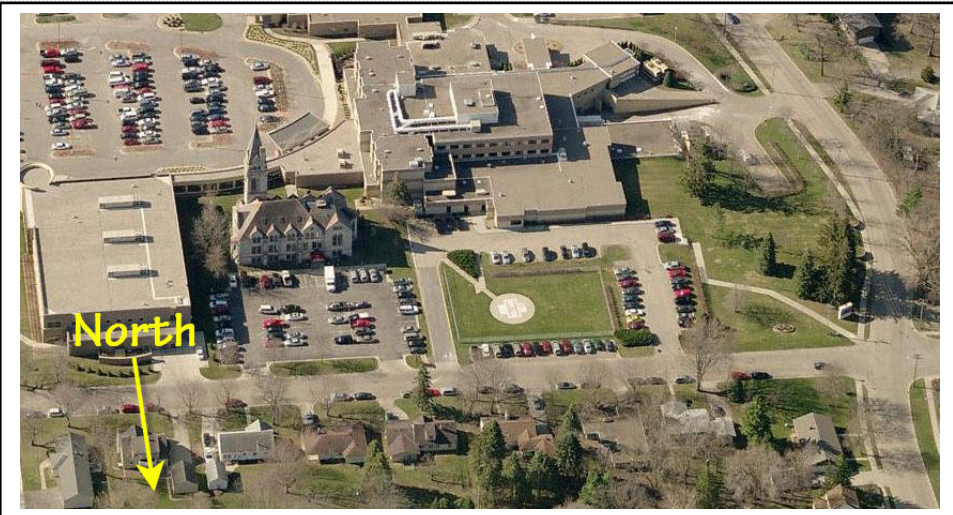
Lighting

PCL: No
Beacon: No
Perimeter: No
Flood:
Windsock: Lighted

Preferred App/Dep: E/W

Obstructions / Cautions / Notes

4' chain link fence around helipad. Tall steeple ESE of pad.
 Wires, 75' trees West of Pad. Approach E/W along roadway.



Faribault, MN

District One Hospital

Jet-A Fuel Information

Nearest Fuel: KFBL
Phone: 507-332-0140

Nearest Weather Reporting

KFBL 111.2
 507-332-2505

Hospital Information

Unit: Emergency Department
Unit Phone: 507-334-6451
Addr: 631 SE 1st St
 Faribault, MN 55021
County: Rice

Frequency/PL (Wulf / Tone / Tech):
 T-155.385 / PL 15 / 103.5 / 13
 R-155.385 / PL 15 / 103.5 / 13
Encode:
MRI:

Additional Notes

Hospital East side of town, Helipad North side of hospital. 1/2 mile North of prison.
 Avoid overflying prison.

